



NUMER HYD

MULTI-STATION MANIFOLD CETOP 3

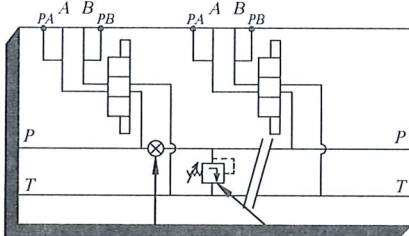
S3A

A24

REAR EXIT

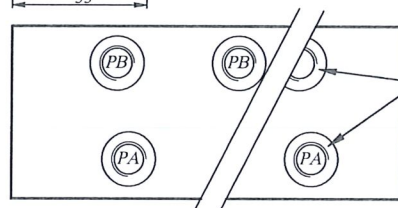
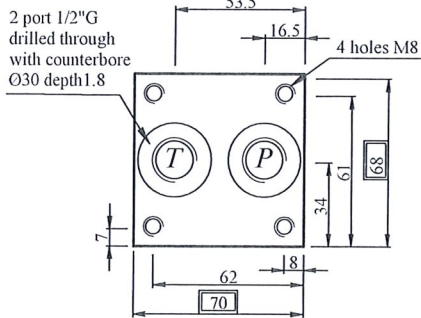
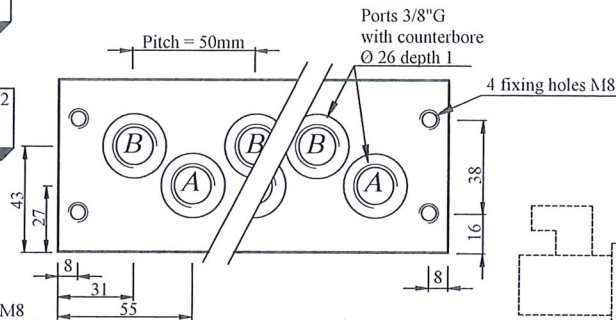
- Sorties arrière
- Rückseitig

- Service pressure 500bar for steel - 300bar for aluminium alloy.
- Possibility of connection with a special manifold.
- Possibility of connection with several block S3 or S5.

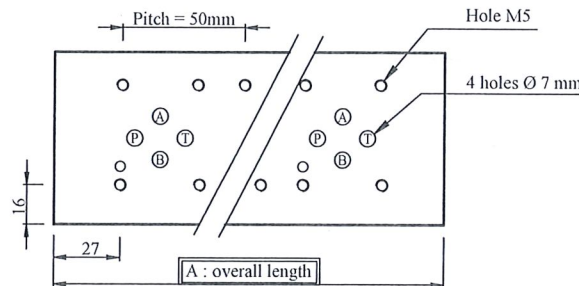
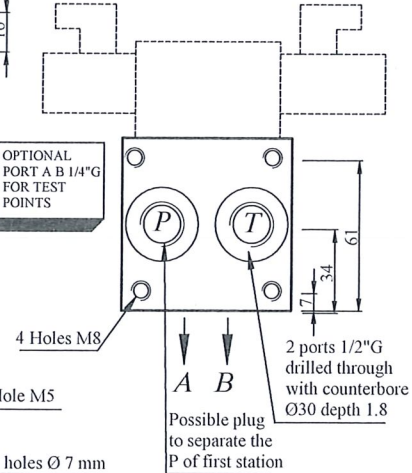


Tapped hole 3/8"G for possible plug to separate the P of first station (plug out of supply)

Cavity C10.2 optional



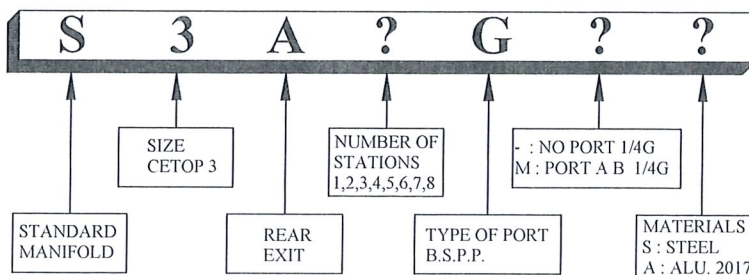
OPTIONAL PORT A B 1/4"G FOR TEST POINTS



DIMENSIONS

MODEL	A	weight (kg)	
		STEEL	ALU
S3A1G-	85	2.6	0.9
S3A2G-	135	4.1	1.5
S3A3G-	185	5.7	2.1
S3A4G-	235	7.3	2.6
S3A5G-	285	8.9	3.2
S3A6G	335	10.5	3.8
S3A7G-	385	12.0	4.3
S3A8G-	435	13.6	4.8

MODEL CODE





MULTI-STATION MANIFOLD CETOP 3

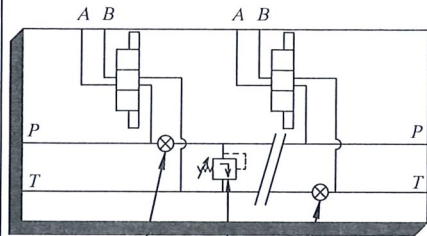
S3L

A24

SIDE EXIT

- Sorties latérales
- Seitlich

- Service pressure 500bar for steel - 300bar for aluminium alloy.
- Possibility to connect with a special manifold.
- Possibility to connect with several block S3 or S5.

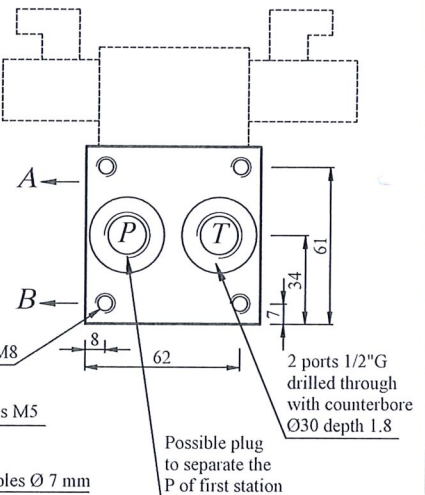
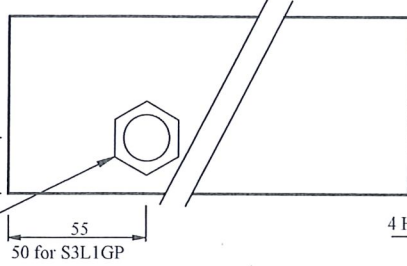
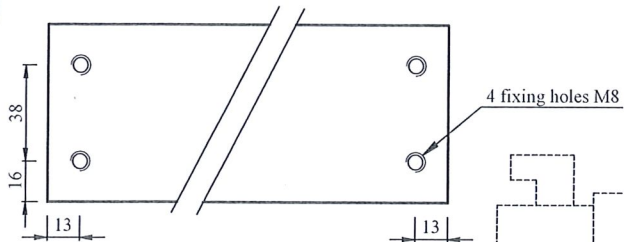
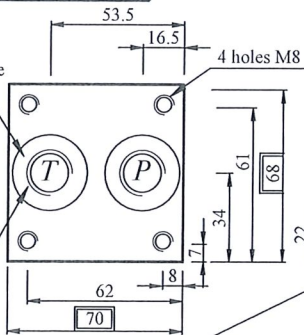


Cavity C10.2 optional

Tapped hole 3/8"G for possible plug (plug out of supply)

2 port 1/2"G drilled through with counterbore Ø30 depth 1.8

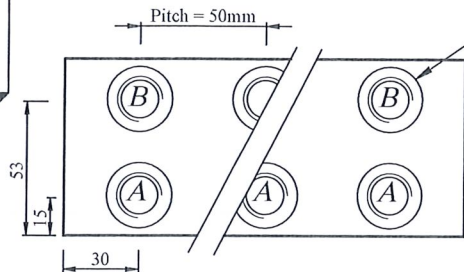
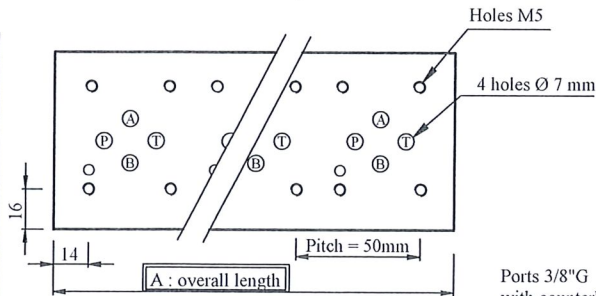
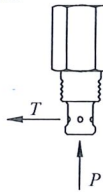
Possible plug to separate the T of first station



* OPTIONAL CAVITY FOR VALVE C10.2 COMPONENT FOR EXAMPLE: (OUT OF SUPPLY)

- * HYDRAFORCE VC10.2 RV10-20/RV10-26
- * EATON C10.2 RV2-10/RV5-10
- * PARKER C10.2 RD102
- * HYDAC FC10-2 DB10P
- ETC...

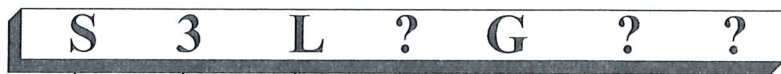
* AND ALSO: DIRECTIONAL VALVE, RESTRICTOR, CHECK VALVE



DIMENSIONS

MODEL	A	weight (kg)	
		STEEL	ALU
S3L1G-	60	1.7	0.6
S3L1GP-	80	2.3	0.8
S3L2G-	110	3.3	1.2
S3L3G-	160	5.0	1.8
S3L4G-	210	6.6	2.3
S3L5G-	260	8.2	2.9
S3L6G	310	9.7	3.5
S3L7G-	360	11.3	4.0
S3L8G-	410	13.0	4.6

MODEL CODE



STANDARD MANIFOLD

SIZE CETOP 3

SIDE EXIT

NUMBER OF STATIONS 1,2,3,4,5,6,7,8

TYPE OF PORT B.S.P.P.

- : NO CAVITY P : CAVITY C10.2

MATERIALS S: STEEL A: ALU. 2017A



NUMER HYD

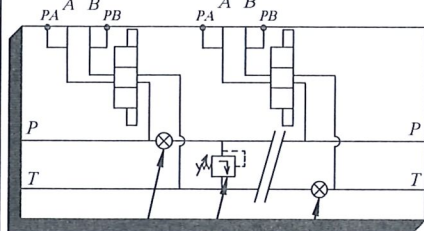
MULTI-STATION MANIFOLD CETOP 3

S3L.M

A24

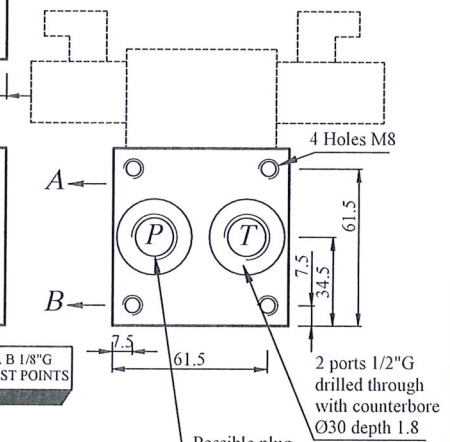
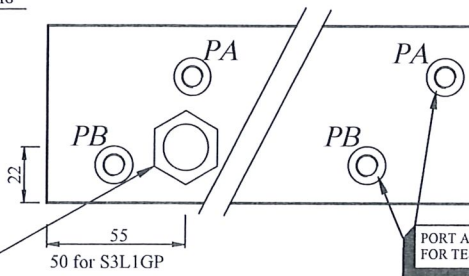
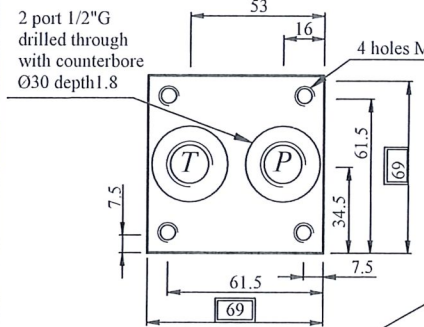
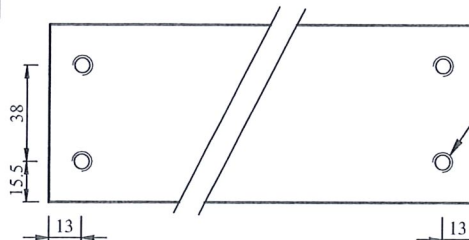
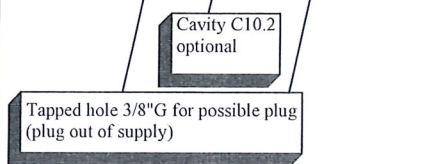
WITH PORT 1/8" G ON A & B

SIDE EXIT



- Sorties latérales
- Seitlich

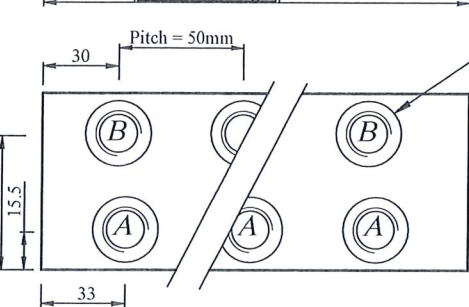
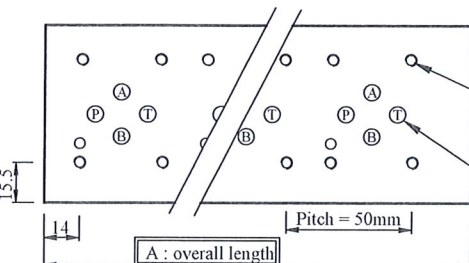
- Service pressure 500bar for steel - 300bar for aluminium alloy.
- Pressure test points 1/8" G on A & B.
- Possibility to connect with a special manifold.
- Possibility to connect with several block S3 or S5.



*** OPTIONAL CAVITY FOR VALVE C10.2 COMPONENT FOR EXAMPLE : (OUT OF SUPPLY)**

- * HYDRAFORCE VC10.2 RV10-20/RV10-26
- * EATON C10.2 RV2-10/RV5-10
- * PARKER C10.2 RD102
- * HYDAC FC10-2 DB10P
- ETC...

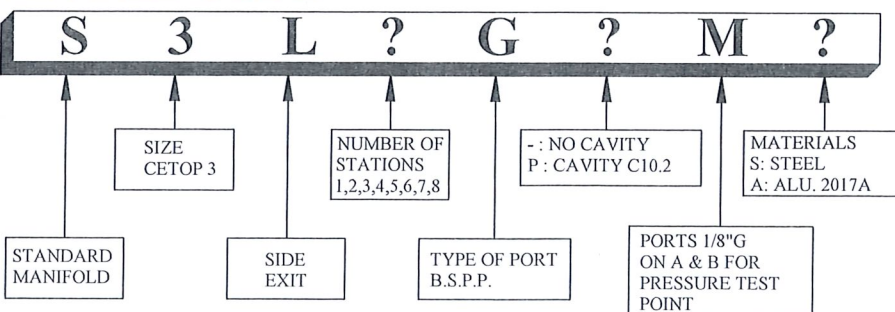
*** AND ALSO :**
DIRECTIONAL VALVE
RESTRICTOR
CHECK VALVE



DIMENSIONS

MODEL	A	weight (kg)	
		STEEL	ALU
S3L1GM	70	2.1	0.8
S3L1GPM	80	2.3	0.8
S3L2G-M	120	3.6	1.4
S3L3G-M	170	5.1	1.9
S3L4G-M	220	6.7	2.5
S3L5G-M	270	8.3	3.0
S3L6G-M	320	9.9	3.6
S3L7G-M	370	11.5	4.1
S3L8G-M	420	13.1	4.6

MODEL CODE



STANDARD MANIFOLD

SIZE CETOP 3

SIDE EXIT

NUMBER OF STATIONS
1,2,3,4,5,6,7,8

TYPE OF PORT B.S.P.P.

- : NO CAVITY
P : CAVITY C10.2

PORTS 1/8" G ON A & B FOR PRESSURE TEST POINT

MATERIALS
S: STEEL
A: ALU. 2017A